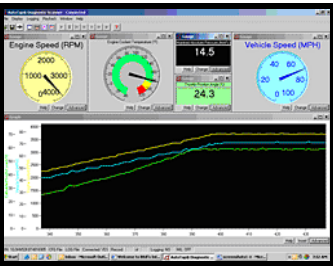


RUGGED DC PC

*"Rough-and-Ready"
for Extreme Environments*

Designed for automotive and marine applications.

- Integrate multiple applications with one PC or use multiple computers to create virtual multi-processor system
- 12-29VDC Powered, PC-based Heavy-Duty Automotive / Marine / Industrial Computer
- Exclusive Power Control System with Built-in UPS (*Patent Pending*)
- Compact, Sealed Case with Exclusive Passive Cooling Technology (*Patent Pending*)
- Ultra-low DC Input Power <40W (2~3A @ 12VDC) typical
- Intel Core 2 Duo processor standard
- Interchangeable with hardened laptops, embedded control computers and vehicular based computer systems
- Vehicle mounted or field deployable
- Open Architecture. Tested to run all PC Operating Systems: Windows XP, Vista, Linux, QNX, XPe, CE, Etc.



**AutoTap OBDII/CAN
Engine Management Software**



A20-MC (standard configuration)... MSRP \$4,895



**A20-HH: Harsh Environment, Power Fault Tolerant,
USB 2.0 Hub with 6 Harsh USB Ports powered by
A20-MC Power System**



**A20-DH: 1 DIN, Slot Load, Power Fault Tolerant, CD/
DVD RW, USB 2.0 Hub powered by A20-MC Power**



**Nobeltec GPS
Nobeltec Admiral Software
Suite Certified**

All trademarks are owned by their respective owners.



A20-MC

19629 S. McCord Rd.
Oregon City, OR 97045
www.AplusMobile.com
503.265.9325
Sales@AplusMobile.com
CAGE Code: 4P1Q1

Specifications

- **Capability:** Open Architecture so it will run all currently available PC operating systems, applications and peripherals. This enables the A20-MC to replace or upgrade existing field computers that present maintenance or reliability issues. Upgrades can be accomplished by IT personnel, without extended training or infrastructure upgrade.
- **Power Efficiency:** Draws less than 40W of power. Powered by vehicles's primary battery and alternator. No power infrastructure upgrades necessary. The A20-MC is powered by the raw 12-29VDC bus (0-30VDC operational).
- **Reliability:** Passively cooled, sealed (*patent pending*) to prevent contaminant ingestion of dust or water, the leading cause of field deployed computer failures. Power Fault Tolerant™ (*patent pending*) with internal UPS (uninterruptible power supply) so that the A20-MC is immune to power transients.
- **Processing Power:** High computing processor power of the Intel Core 2 Duo, the most advanced processor on the market for mobile applications. The A20-MC is based on Intel chipsets and related components.
- **Flexible Form Factor:** Remotely mounted from monitors and other peripherals for maximum flexibility.
- **Dimensions:** 2.85"h (7.2cm) x 10.5"w (26.7cm) x 9"d (22.9cm)
- **Weight (Standard Configuration):** 10.9 lbs. (4.954kg)
- **User Manual:** Available at www.AplusMobile.com

| A20-MC Standard Configuration..... MSRP \$4,895 | |
|---|--|
| Processor | Intel Core 2 Duo, T5600 @ 667MHz FSB |
| Chipset | Intel GM(E)965 north bridge, ICH8M south bridge |
| System Memory | 2GB DDR2 677 SDRAM memory size (2 x 1GB) |
| XVGA video | Built-in Intel Graphics with GMA X3100 Technology |
| Onboard CF Slot | One 2GB CF type-II |
| Onboard Video | XVGA, TV OUT, Composite, Component (YPbPr), 1080p HDTV 1600 x 1200 max |
| Onboard Audio | Intel ICH8-M with Realtek ALC888 HD Audio, stereo connection standard with adapter cable |
| Onboard USB | Two harsh USB 2.0 (Can use standard USB cables) |
| Onboard LAN | Intel 82573L 10/100/1000GB |
| Voltage Input | Universal 12-29VDC nominal line |
| Typical Power Consumption | <40W (2 ~ 3A @ 12VDC) |
| APM I/O Conn. | DB-15 APM Expansion Connector |
| Onboard CF Slot | One 2GB CF type-II |
| Onboard Serial | 2 x RS-232 (standard) or 1 x RS-232 and 1 x RS232/422/485 * |
| Internal Mini-PCI | Two Optional Mini-PCI add-in cards * |
| Onboard SATA HD | One 250GB SATA, Mechanical 2.5" hard drive |

| A20 Accessories and Options | | MSRP |
|-----------------------------|--|--------|
| A20-DH | 1DIN, Harsh, Remote Dash Interface with DVD/RW Slot Load Drive and USB Ports | \$899 |
| A20-HH | Harsh USB 2.0 Hub, Aluminum Chassis | \$575 |
| OBDII/CAN Module | Scan interface and software | \$199 |
| OBDII/CAN Module Enhanced | Enhanced parameter per vehicle type (GM/Ford/Chrysler) | \$349 |
| 4GB DDR2 RAM | Dual channel (2 x 2GB) MB. Only 3GB accessible. | \$380 |
| A20-CS | Basic Accessories Cable Set | \$299 |
| Firewire | IEEE 1394A pigtail | \$65 |
| T7500 Intel CPU | T7500 Core 2 Duo Upgrade | \$145 |
| Preloaded Windows XP | Windows XP Home Operating System (Add \$50 for Pro Upgrade) | \$249 |
| 4GB CF Card | 4GB CF Upgrade | \$75 |
| 8GB CF Card | 8GB CF Upgrade | \$120 |
| 16GB CF Card | 16GB CF Upgrade | \$185 |
| RS485 / RS422 | 1 x RS485 or 1 x RS422 * | \$25 |
| APM-MP-878D | Mini-PCI video capture card, Conexant Bt878A decoder | \$214 |
| APM-MP-323 | Mini-PCI IEEE 1394A Module (3 ports) with cables | \$257 |
| APM-MP-954 | Mini PCI support 4 x Serial Ports Module (3 x RS232 and 1 x RS232/422/485) * | \$156 |
| APM-MP-541D2 | Mini-PCI Dual Gigabit Ethernet Module with cables | \$309 |
| APM-MP-2501 | Mini-PCI 802.11b/g Wireless card | \$168 |
| Dual 250GB HD | 2 x 2.5" Mech. Harddrive (500GB total) | \$180 |
| 32GB SSD | 32GB Solid State Harddrive | \$240 |
| Dual 32GB SSD | 2 x 32GB SSD (64GB total) | \$564 |
| 64GB SSD | 64GB Solid State Harddrive | \$549 |
| Dual 64GB SSD | 2 x 64GB SSD (128GB total) | \$1180 |

* All configurations must be specified at time of order. Motherboard not user accessible. Other configurations available, please consult factory.

Copyright 2003-2007 Aplus Mobile, Inc. All rights reserved.
All Trade Marks are owned by their respective owners, whether marked TM or otherwise.

84-0A20-RT_RN_0903.fm



A20-MC

19629 S. McCord Rd.
Oregon City, OR 97045
www.AplusMobile.com
503.265.9325
Sales@AplusMobile.com
CAGE Code: 4P1Q1